



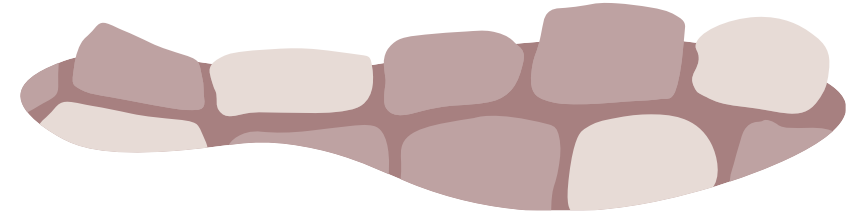
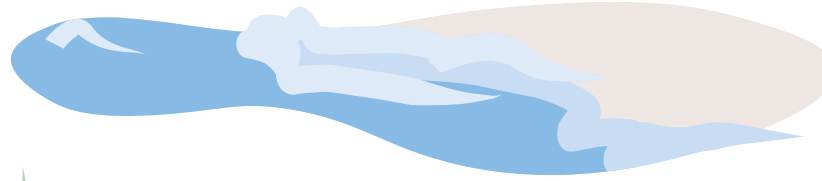
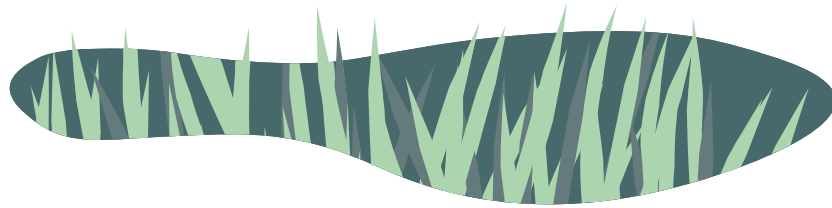
PEGASUS
HOMES



Walking *Guide*

National Walk (& Wheels) Month 2025

May National Walk (& Wheels) Month



Lace up your walking shoes, dust off your scooters, and oil those wheelchair wheels! May is National Walking Month, and we're embarking on an 6,000-mile journey, a collective stride to support Re-engage, a charity that supports and reduces loneliness in older people.

We want to get as many people as possible to explore the local areas that surround our wonderful Pegasus communities and enjoy the many benefits that getting outside for a stroll can bring, both physical and psychological.

We are asking for a £5 entry fee to take part and all funds raised will go to Re-Engage.

We're aiming for 200 participants to take part, which would mean completing an average of just one mile a day, to make a real difference. Plus, with a prize for the top resident and staff walkers, and with better weather just on the horizon, there's never been a better time to get moving!

How does it work?

1) To sign up email: marketing@pegasushomes.co.uk you will be sent joining information (including details on how to complete the below).

2) Download the Strava Club app and join our Strava Club: **Pegasus Homes Walking Month**



3) Donate your entry fee to our Just Giving page: **Pegasus Homes' fundraiser: Re-Engage**



If you don't want to use the app, you can simply share your weekly mileage with your on site team who will share with the marketing team to add to the group tally.

Where can you walk?

Whether it's the trip to the local shops, a walk around town or a ramble using this new location guide, every step, scoot or wheel will count towards our goal.

Why should you take part?

As well as the many health benefits to walking, physically and mentally, challengers can win a prize for taking part!

Every resident and staff member that takes part will be entered into a prize draw, with a prize of £50 in vouchers to be won! Residents and staff members will be put into separate ballots and a prize draw will be done for each group.

About Our Charity: Re-Engage

We are delighted to announce that we will be raising money for Re-Engage, a charity dedicated to combating loneliness among older adults across the UK. To make this vision a reality, they foster vibrant communities through monthly tea parties, warm telephone calls through their 'Call Companions' initiative, and engaging volunteer-led activities, ensuring that no one feels too old to make meaningful connections.



Discover how Re-Engage is making a real difference in combating loneliness here:



Find a route *near you*



BELLE VUE
HAMPSTEAD

Rowland Hill Street, London, NW3 2AQ

1 Hampstead Heath Circular walk

Difficulty level: ① ② ③

Getting there: 🚶 11 mins

Distance: 4.5 miles



Route

Take a leisurely 12-minute walk to Hampstead Heath, a sprawling, ancient park in North London, offering a unique blend of wild landscapes and panoramic city views. The Heath maintains a 'wild' feel, offering a sense of getting away from the urban environment and remains a popular location for a range of recreational activities.

Start point

Hampstead Underground Station,
Hampstead High St, London, NW3 1QA

End point

Hampstead Underground Station,
Hampstead High St, London, NW3 1QA

Local Cafés / Pubs / Amenities

The Nook. Rose & Rose. Mileto Café.

2 Kenwood House and Estate

Difficulty level: ① ② ③

Getting there: 🚶 11 mins 🚶 40 mins

Distance: 112 acres to explore



Route

Kenwood is one of London's hidden gems, on the edge of Hampstead Heath and surrounded by tranquil landscaped gardens.

Start point

Hampstead Lane, NW3 7JR

End point

Hampstead Lane, NW3 7JR

Local Cafés / Pubs / Amenities

Brew House Café. Stewards Room Café.



LEYTON ROAD

HARPENDEN

23a Leyton Road, Harpenden, AL5 2FH



COBHAM BOWERS

SURREY

74 Portsmouth Road, Cobham, KT11 1FG

3 Rothamsted Park Walking Trail

Difficulty level: ① ② ③

Getting there: 🚶 5 mins

Distance: 3 miles



Route

Perfectly positioned to our Leyton Road community is Rothamsted Park –

a beautiful green space, spanning 23 hectares, this park has something for everyone to enjoy. Rothamsted Park is the perfect spot for a leisurely stroll and quiet picnic.

Start point

The Old Drinking Fountain opposite Pizza Express

End point

Harpenden Town Centre

Local Cafés / Pubs / Amenities

Rothamsted Restaurant & Café. Brad & Dills. Lazy Bear Waffle & Coffee Shop.

4 Harpenden Common Nature Trail

Difficulty level: ① ② ③

Getting there: 🚶 3 mins 🚶 23 mins

Distance: 1.2 miles



Route

This trail is the is ideal for anyone looking for a shorter walk close to the Town

Centre. Generally flat, this trail takes you through Harpenden's Coronation Meadow; one of Sixty "meadows" identified as part of the Queens 60th Coronation anniversary campaign to restore the UK's threatened wildflower meadows. This walk can be casually enjoyed in around 30 minutes.

Start point

Information Point, Harpenden Common

End point

Information Point, Harpenden Common

Local Cafés / Pubs / Amenities

Nonna's Café & Restaurant. Okka Café & Restaurant.

5 The River Mole Walk

Difficulty level: ① ② ③

Getting there: 🚶 17 mins

Distance: 3.1 miles



Route

Cobham's River Mole offers a serene escape into Surrey's lush countryside.

Begin your tranquil 3-mile loop near the historic mill in the High Street, where a well-maintained path invites a leisurely afternoon stroll. This easy, level circular route leads you to the picturesque Downside Bridge, offering a refreshing dose of nature. With minimal elevation gain, it's the perfect ramble for all ages.

Start point

Historic mill in the High Street

End point

Historic mill in the High Street

Local Cafés / Pubs / Amenities

Fego Restaurant Cobham. Hapi Café.

6 Painshill Gardens

Difficulty level: ① ② ③

Getting there: 🚶 6 mins

Distance: 2.5 miles 🚶 1.5 miles



Route

Step into a living masterpiece at Painshill, an acclaimed 18th-century

landscape garden. Explore the serene Serpentine Lake, wander through enchanting woodlands, and marvel at iconic structures like the Ruined Abbey, Gothic Temple, and Turkish Tent. Choose from two routes (one is wheelchair accessible).

Start point

Painshill Car Park visitor entrance (N.B. Entrance Fee)

End point

Painshill Car Park visitor entrance

Local Cafés / Pubs / Amenities

Mr Hamilton's Tea Room (Located in the Visitor Centre). The Gothic Tower Café (Pop-up open in Summer months). Horsebox Café. Ice Cream Hut.



HIGHFIELDS

WEST BYFLEET

Hobbs Close, West Byfleet, KT14 6FF



WOOBURN BALES

BUCKINGHAMSHIRE

10 Wycombe Lane, High Wycombe, HP10 0EZ

7 Wisley & Ockham Commons

Difficulty level: 1 2 3

Getting there: 10 mins

Distance: 733 acres to explore



Route

Wisley & Ockham Commons, including Chatley Heath, offer over 800 acres of heathland and woodland, a nationally significant habitat for dragonflies and rare birds. Facilities, including a café, are located at the Bolder Mere car park on Ockham Common. Unfortunately the terrain is not wheelchair accessible.

Start point

Boldermere Car Park (KT11 1NR) or Pond Car Park (KT11 1NR) or Wren's Nest Car Park (GU23 6QA)

End point

Boldermere Car Park (KT11 1NR) or Pond Car Park (KT11 1NR) or Wren's Nest Car Park (GU23 6QA)

Local Cafés / Pubs / Amenities

Ockham Bites. Wisley Café.

8 Manor Farm Circular

Difficulty level: 1 2 3

Getting there: 5 mins 25 mins

Distance: 2.6 miles



Route

Enjoy a 4.3km circular walk near West Byfleet, Surrey, typically completed in under an hour. Ideal for a peaceful hike, run, or stroll, this route offers a tranquil escape with minimal crowds.

Start point

Byfleet village green, Oyster Lane

End point

Byfleet village green, Oyster Lane

Local Cafés / Pubs / Amenities

Coffee Corner Stop. Café Joen.

9 Bletchley Park

Difficulty level: 1 2 3

Getting there: 1 hour

Distance: n/a



Route

If you're looking for a day trip combining history with a refreshing walk, Bletchley Park's expansive grounds are criss-crossed with delightful trails, ideal for a summer day trip. Extend your adventure with a ramble around Caldecotte Lake's shimmering waters or a gentle riverside amble along the peaceful River Ouzel.

Start point

The Mansion, Bletchley Park, Sherwood Drive, Bletchley, Milton Keynes, MK3 6EB

End point

The Mansion, Bletchley Park, Sherwood Drive, Bletchley, Milton Keynes, MK3 6EB

Local Cafés / Pubs / Amenities

Hut 4 Café. Block C Café.

10 Wooburn Park & Green

Difficulty level: 1 2 3

Getting there: 11 mins

Distance: n/a



Route

Wooburn Park provides open recreational spaces with playing fields, offering a local area for outdoor activity. A community park that allows for leisure activities, with amenities like tennis courts, and is the perfect spot to enjoy a summer's day picnic with friends within its expansive leafy, green areas.

Start point

10 Wycombe Lane, Wooburn Green, High Wycombe, HP10 0EZ

End point

10 Wycombe Lane, Wooburn Green, High Wycombe, HP10 0EZ

Local Cafés / Pubs / Amenities

The Coach House Pub. Dolce Vita Restaurant. Coffee Point - The Shed.



ONE BAYSHILL ROAD

CHELTENHAM

One Bayshill Road, Cheltenham, GL50 3FH



STEEPLETON

TETBURY

Cirencester Road, Tetbury, GL8 8FQ

11 Pittville Park

Difficulty level: ① ② ③

Getting there: 🚗 9 mins 🚶 25 mins

Distance: 33 hectares to explore



Route

Established in 1825, Pittville Park stands as Cheltenham's grandest ornamental green space. Its expansive grounds, bisected by Evesham Road, feature the iconic Pump Room and serene lakes. Bordered by Tommy Taylor's Lane and Pittville Lawn, the park extends south to Wellington Road, offering a vast and varied landscape for all to enjoy.

Start point

Car Park behind the Pittville Park Pump Room on the Eastern side of the park

End point

Car Park behind the Pittville Park Pump Room on the Eastern side of the park

Local Cafés / Pubs / Amenities

O'Hara's Coffee House. The Clementine Café. Lazy Graze.

12 Hatherley Park

Difficulty level: ① ② ③

Getting there: 🚗 4 mins 🚶 25 mins

Distance: 3 hectares to explore



Route

As one of Cheltenham's six Green Flag Award parks, Hatherley Park is a charming ornamental garden spanning around 3 hectares. The perfect spot for an afternoon stroll in a peaceful, tranquil setting.

Start point

Hatherley Court Road (Northern entrance) or Bournside Road (Southern entrance)

End point

Hatherley Court Road (Northern entrance) or Bournside Road (Southern entrance)

Local Cafés / Pubs / Amenities

Cobo Coffee. The Clementine Café.

13 Westonbirt Arboretum

Difficulty level: ① ② ③

Getting there: 🚗 8 mins

Distance: n/a



Route

Termed a 'magical tree garden', Westonbirt Arboretum allows visitors to explore trees from all over the globe. With 2,500 different species Westonbirt is the perfect place for you to take a leisurely stroll under the canopy of the arboretum's forest.

Start point

Tetbury GL8 8QS

End point

Tetbury GL8 8QS

Local Cafés / Pubs / Amenities

The Kitchen. The Pantry. The Smokehouse. The Hub - located at Steepleton!

14 Cherington Pond

Difficulty level: ① ② ③

Getting there: 🚗 8 mins

Distance: n/a



Route

Cherington Pond is a small freshwater lake in Gloucestershire and provides the perfect place to while away an summer's afternoon amongst nature.

Start point

Cherington, Cotswold, Gloucestershire, South West England (Car Park)

End point

Cherington, Cotswold, Gloucestershire, South West England (Car Park)

Local Cafés / Pubs / Amenities

Willow & Co. The Canteen. Three Storey's. The Hub - located at Steepleton!



LATHERAM HOUSE

CHELTENHAM

Clarence Street, Cheltenham, GL50 3PL



THE VINCENT

BRISTOL

Redland Hill, Bristol, BS6 6BJ



15 Pittville Park

Difficulty level: 1 2 3

Getting there: 5 mins 20 mins

Distance: 33 hectares to explore



Route

Established in 1825, Pittville Park stands as Cheltenham's grandest ornamental green space. Its expansive grounds, bisected by Evesham Road, feature the iconic Pump Room and serene lakes. Bordered by Tommy Taylor's Lane and Pittville Lawn, the park extends south to Wellington Road, offering a vast and varied landscape for all to enjoy.

Start point

Car Park behind the Pittville Park Pump Room on the Eastern side of the park.

End point

Car Park behind the Pittville Park Pump Room on the Eastern side of the park.

Local Cafés / Pubs / Amenities

O'Hara's Coffee House. The Clementine Café. Lazy Graze.

16 Montpellier Gardens

Difficulty level: 1 2 3

Getting there: 13 mins

Distance: 600 acres to explore



Route

Cheltenham's Montpellier Gardens offer a delightful double act for walkers. Start with a leisurely saunter down the charming Highstreet, a prelude to the park's diverse offerings. Whether you're seeking a lively afternoon or a moment of quiet reflection, Montpellier Gardens caters to every pace.

Start point

24 Montpellier, Spa Road, Cheltenham, GL50 1UL

End point

24 Montpellier, Spa Road, Cheltenham, GL50 1UL

Local Cafés / Pubs / Amenities

Lazy Graze. Coffee #1. The Clementine Café.

17 Clifton Village

Difficulty level: 1 2 3

Getting there: 15 mins

Distance: n/a



Route

A 15-minute walk from The Vincent to the 'most beautiful' shopping quarter of Bristol, Clifton Village is the perfect place to enjoy a late afternoon Summer wander. Surrounded by Georgian architecture, take your pick from any one of the many up-market independent shops and boutiques selling jewellery, art, gifts and more.

Start point

The Vincent, Redland Hill Bristol, BS6 6BJ

End point

Clifton, Bristol BS8 4AD

Local Cafés / Pubs / Amenities

East Village Café. Primrose Café. Saffron.

18 Ashton Court Estate

Difficulty level: 1 2 3

Getting there: 14 mins

Distance: 850 acres to explore



Route

The Ashton Court Estate, a former Smyth family home is now an expansive 850 acre park in Bristol, offering both historical charm with ancient oaks and roaming deer, and a wide array of recreational activities including golf, biking, and adventure courses.

Start point

Ashton Court Estate, Long Ashton, Bristol, BS41 9JN

End point

Ashton Court Estate, Long Ashton, Bristol, BS41 9JN

Local Cafés / Pubs / Amenities

Courtyard Café. Ice cream pop-ups.



THE FITZROY

FALMOUTH

Cliff Road, Falmouth, TR11 4FR



JESMOND ASSEMBLY

NEWCASTLE

Eskdale Terrace, Newcastle Upon Tyne, NE2 4DH



19 Pendennis Point

Difficulty level: 1 2 3

Getting there: 20 mins

Distance: 1 mile



Route

Just a 20 minute walk from The Fitzroy, Pendennis Point is an iconic landmark to visit on your next coastal walk. One of the main attractions at Pendennis Point is the castle. The castle is open to the public and you can explore the various rooms and exhibits to learn about its fascinating history.

Start point

The Fitzroy, Cliff Road, Falmouth, TR11 4FR

End point

The Pendennis Point, Falmouth, TR11 4WZ

Local Cafés / Pubs / Amenities

Castle Beach Café. Gylly Beach Café.

20 Queen Mary Gardens

Difficulty level: 1 2 3

Getting there: 7 mins

Distance: n/a



Route

Open all year-round the Queen Mary Gardens provide a peaceful escape. Framed by Monterey Pines, the gardens are located directly behind Gyllyngvase Beach, and is accessible for varying abilities. The gardens are full of history, having opened in 1912 to commemorate the coronation of Queen Mary.

Start point

Queen Mary Gardens, Cliff Road, Falmouth TR11 4LX

End point

Queen Mary Gardens, Cliff Road, Falmouth TR11 4LX

Local Cafés / Pubs / Amenities

Gylly Beach Café.

21 Brandling Park

Difficulty level: 1 2 3

Getting there: 4 mins

Distance: n/a



Route

In the heart of Newcastle, a 4-minute walk from our Jesmond Assembly community, the popular Victorian park maintains a quiet village green atmosphere which is a favourite spot among locals.

Start point

15 Brandling Park, Jesmond, Newcastle upon Tyne, NE2 4RR

End point

15 Brandling Park, Jesmond, Newcastle upon Tyne, NE2 4RR

Local Cafés / Pubs / Amenities

Willi's Café Jesmond. Cog & Wheel Pub.

22 Jesmond Dene Nature and Shops Walk

Difficulty level: 1 2 3

Getting there: 7 mins

Distance: 2.7 miles



Route

The Jesmond Dene Nature and Shops Walk takes you around the lovely area of Jesmond and the beautiful Jesmond Dene valley.

Start point

Jesmond Dene Road

End point

3 Brentwood Ave, West Jesmond, Newcastle upon Tyne, NE2 3DH

Local Cafés / Pubs / Amenities

Olive Coffee Co. One Kitchen & Social.



LICHFIELD BONDS

STAFFORDSHIRE

Cross Keys, Staffordshire, WS13 6FP



BATH LEAT

BATH

Upper Bristol Road, Bath, BA1 3ER

23 Beacon Park

Difficulty level: 1 2 3

Getting there: 15 mins

Distance: 70 acres to explore



Route

Beacon Park is a green flag public park in the centre of the city of Lichfield, Staffordshire, in England. The park was created in 1859 when the Museum Gardens were laid out adjacent to the newly built Free Museum and Library.

Start point

Beacon Park, Swan Road, Lichfield, WS13 6QZ

End point

Beacon Park, Swan Road, Lichfield, WS13 6QZ

Local Cafés / Pubs / Amenities

City Corner Café. Damn Fine Café. The Plough Pub (10 mins drive).

24 Pipe Hall Farm Circular Trail

Difficulty level: 1 2 3

Getting there: 14 mins

Distance: 2.8 miles



Route

This circular trail near Lichfield, is considered an enjoyable route for varied abilities, and has picture-perfect views of Lichfield Cathedral and Maple Hays Hall.

Start point

St Matthew's Road, Pipe Hall Farm

End point

St Matthew's Road, Pipe Hall Farm

Local Cafés / Pubs / Amenities

Strawberry Fields Café. Thyme Kitchen.

25 Royal Victoria Park

Difficulty level: 1 2 3

Getting there: 7 mins

Distance: 57 acres to explore



Route

Just a short stroll from the city centre, Royal Victoria is a beautiful expanse of green parkland, spanning 57 acres. Originally an arboretum, it is still home to beautiful botanic gardens and the Great Dell Aerial Walkway.

Start point

Marlborough Lane, Bath, BA1 2NQ

End point

Marlborough Lane, Bath, BA1 2NQ

Local Cafés / Pubs / Amenities

BRaC - located at Bath Leat! The Green Bird Café. Treetop Café. Herberts Café.

26 Bath Skyline Walk

Difficulty level: 1 2 3

Getting there: 11 mins 30 mins

Distance: 6 miles



Route

For those who enjoy a longer ramble, this elevated circular walk provides ever-changing, year-round views of Bath, nestled within its wooded hills. The unique juxtaposition of the city against its surrounding rural tranquillity has contributed to the area's designation as a World Heritage Site.

Start point

Bathwick Hill at Cleveland Walk

End point

Bathwick Hill at Cleveland Walk

Local Cafés / Pubs / Amenities

Garden Café in Holburne Museum.



LYMINGTON GATE

HAMPSHIRE

1-44 Stanford Hill, Lymington, SO41 8DE



WINCHESTER HOLTS

HAMPSHIRE

33 Sarum Road, Winchester, SO22 5HA

27 Lymington-Keyhaven Nature Reserve

Difficulty level: 1 2 3

Getting there: 13 mins

Distance: 5 miles



Route

A short drive from Lymington Gate, The Lymington-Keyhaven Nature Reserve Walk is a gentle, flat, 5-mile circular walk exploring a unique coastal landscape rich in wildlife, history, and local culture. Along this Lymington circular walk, you'll encounter gorgeous green vistas and plenty of local wildlife, including native birds, deer and possibly a pony or two.

Start point

Lymington Harbour

End point

Keyhaven Nature Reserve

Local Cafés / Pubs / Amenities

The Gunn Inn.

28 Lymington Town Trail

Difficulty level: 1 2 3

Getting there: 4 mins 17 mins

Distance: 2 miles



Route

This loop walk, starting and ending at Lymington Town Railway Station, offers a rich blend of historical exploration and scenic coastal views, encompassing the St. Barbe Museum, the bustling high street, and the picturesque harbour. The route showcases Lymington's maritime heritage, featuring yachts, sea water baths, and fine panoramic vistas.

Start point

Lymington Town Railway Station, SO41 9AU

End point

Lymington Town Railway Station, SO41 9AU

Local Cafés / Pubs / Amenities

Hazy Days Coffee. Babelas. Hoxton Bakehouse. Coffee & Drift. Mine's a Pasty Ltd.

29 Water Meadows Walk

Difficulty level: 1 2 3

Getting there: 3 mins 17 mins

Distance: 3.6 miles



Route

Explore the idyllic Itchen Navigation with this scenic loop. Choose your path: accessible-friendly meadow route, or a viaduct ramble. This walk blends history, nature, and accessible paths, perfect for a Summer's day out.

Start point

Garnier Road, SO23 9NP

End point

Garnier Road, SO23 9NP

Local Cafés / Pubs / Amenities

The Handlebar Café. The Bridge Patisserie.

30 Accessible trail to explore Winchester

Difficulty level: 1 2 3

Getting there: routes 26 mins

Distance: n/a



Route

Embark on a captivating journey through the historic city of Winchester. This accessible trail allows everyone to experience the city's rich heritage. This route guides you through a selection of Winchester's most beautiful and historically significant landmarks.

Start point

Winchester Visitor Centre

End point

Winchester Visitor Centre

Local Cafés / Pubs / Amenities

The Square. The Cathedral Café. The General Store. Café Monde.



RENAISSANCE CRANLEIGH COVES

51 Horsham Road, Cranleigh, GU6 8DT



RENAISSANCE WANTAGE

Church Street, Oxfordshire, OX12 8GE



ROMSEY HAMPSHIRE

Duttons Road, Romsey, SO51 8XG



31 Knowle Park Country Park

Difficulty level: ① ② ③

Getting there: 🚶 14 mins

Distance: 25 mins loop



Route

Knowle Park, a cherished community trust, offers a delightful escape into nature. Recent enhancements include a vibrant wildlife lake, improved footpaths, and an inviting outdoor event space with an amphitheatre. This compact country park boasts accessible, short, and easy to follow footpaths, making it ideal for a refreshing morning stroll.

Start point

Knowle Ln, Cranleigh, Surrey, GU6 8JL

End point

Knowle Ln, Cranleigh, Surrey, GU6 8JL

Local Cafés / Pubs / Amenities

Mooh! Ice-cream kiosk. Heartwork Coffee Kiosk. Wild & Green Kitchen. Joanna's Boutique Tearoom. The Richard Onslow Pub.

32 Chantry Woods and Surrey Hills Circular

Difficulty level: ① ② ③

Getting there: 🚶 21 mins

Distance: 2.4 miles



Route

The popular Surrey circular route through Chantry Wood to High Ball takes about 1 hour, and is ideal for bird watching, camping, and hiking from January to October. Expect other visitors and varied wildlife, and wear sturdy shoes for the occasional hill climbs.

Start point

Shepherd's Way, Guildford

End point

Shepherd's Way, Guildford

Local Cafés / Pubs / Amenities

Open Grounds Café (En Route).
The Boathouse Café (En Route).

33 Betjeman Millennium Park

Difficulty level: ① ② ③

Getting there: 🚶 3 mins

Distance: lots of parkland to explore



Route

Wantage's secret escape, Betjeman Millennium Park. A semi-wild woodland, a whisper away from Letcombe Brook, it's a haven of pure tranquillity for everyone.

Start point

53 Mill Street, Wantage, OX12 9AB

End point

53 Mill Street, Wantage, OX12 9AB

Local Cafés / Pubs / Amenities

Rusty's Café, Bay Tree Café,
Marmalade.

34 Mottisfont Estate Walk

Difficulty level: ① ② ③

Getting there: 🚶 10 mins

Distance: 1600 acres to explore



Route

Mottisfont, a romantic house and gallery in Hampshire, offers beautiful riverside gardens perfect for summer visits. Explore riverside walkways, an ancient spring, and magnificent trees. Don't miss the roses that bloom in early summer. The wider estate spans 1600 acres, including woodland and farmland. The Test Way, a long-distance walking route, passes through Mottisfont, offering walking opportunities from nearby towns.

Start point

Mottisfont Estate, SO51 0LP

End point

Mottisfont Estate, SO51 0LP

Local Cafés / Pubs / Amenities

The Old Kitchen Café. Old Coach House Café.



ATLANTIC RISE

BUDE

Crooklets Road, Bude, EX23 8ND



CHAPELWOOD

WILMSLOW

Alderley Road, Wilmslow, SK9 1EN



HOLMWOOD

BROCKENHURST

The Rise, Brockenhurst, SO42 7AF



HORTSLEY

SEAFORD

Sutton Park Road, Seaford, BN25 1FA

35 Crackington Haven

Difficulty level: ① ② ③

Getting there: 🚗 20 mins

Distance: 3 miles



Route

A picturesque circular walk starting from Crackington Haven car park, offering varied landscapes, including stunning coastal views, tranquil valleys, a secret beach (Strangles) and charming countryside scenery. This walk is perfect for nature enthusiasts and those seeking a peaceful coastal adventure.

Start point

Crackington Haven Car Park, EX23 OJG

End point

Crackington Haven Car Park, EX23 OJG

Local Cafés / Pubs / Amenities

Haven Café. The Cabin Café.

36 Alderley Edge

Difficulty level: ① ② ③

Getting there: 🚗 6 mins

Distance: n/a



Route

A short car journey from our Chapel Wood community, Alderley Edge is a dramatic sandstone ridge with impressive views over the Cheshire plain towards Manchester and to the hills of Cheshire's Peak District. There is historic interest as the area has been mined for copper as far back as the Bronze Age, by the Romans, and through Medieval times.

Start point

Macclesfield Road, Nether Alderley, Macclesfield, Cheshire, SK10 4UB

End point

Macclesfield Road, Nether Alderley, Macclesfield, Cheshire, SK10 4UB

Local Cafés / Pubs / Amenities

The Wizard Tea Room.

37 Beaulieu to Buckler's Hard Loop

Difficulty level: ① ② ③

Getting there: 🚗 13 mins

Distance: 4.7 miles



Route

Begin in the picture-perfect village of Beaulieu for a gentle, accessible walk along the wildlife-rich Beaulieu River. Your journey culminates at Buckler's Hard, where Lord Nelson's favourite ship, Agamemnon, was built in 1781. Completing the 4-mile loop back to Beaulieu, reward yourself with the village's plentiful ice cream opportunities!

Start point

Beaulieu Village Car Park, SO42 7YG

End point

Beaulieu Village Car Park, SO42 7YG

Local Cafés / Pubs / Amenities

The Beaulieu Bakehouse, Steff's Kitchen (Beaulieu). The Captain's Table, Master Builder's House (Buckler's Hard).

38 Seaford Seafront

Difficulty level: ① ② ③

Getting there: 🚗 3 mins 🚶 9 mins

Distance: n/a



Route

Seaford is blessed with a beautiful seafront; encompassed by the striking presence of Seaford Head and the cliffs on the eastern side and Newhaven Harbour with Mount Pleasant in the distance on the western side. Dependent on how energetic you're feeling, there are plenty of walks to compete in the local area, including: Cuckmere Valley and The Cuckmere Haven to Seven Sisters.

Start point

BN25 4JQ

End point

BN25 4JQ

Local Cafés / Pubs / Amenities

Holy Cow. Frankie's Beach Café.

If you have any questions about
Pegasus Homes' Walking Month
please contact our Marketing Team:

marketing@pegasushomes.co.uk



**Discover a new lease of life in
England's most desirable locations**
0800 060 8730 | [pegasushomes.co.uk](https://www.pegasushomes.co.uk)

Pegasus Homes
105-107 Bath Road
Cheltenham
Gloucestershire
GL53 7PR

Information contained in this document is correct at the time of print, and subject to change. Walks are given as suggestions only, walkers take part at their own risk.